

**村屋**  
VILLAGE HOUSE

HIGH REWARD, LEGAL, PRACTICAL, EARLY BENEFIT  
極高收益 合法實用 早做早得益

**車棚**  
CARPORT

**獨立屋**  
DETACHED HOUSE

**太陽能系統**  
SOLAR SYSTEM

**充電樁**  
CHARGING PILE

**農場**  
THE FARM

SELF-SUFFICIENT, RENEWABLE, INFINITE NEW ENERGY  
自給自足 再生環保 無限新能源

**電池**  
BATTERY



三和聯貿工程有限公司  
SAM WO ENGINEERING HK LTD.

**SAM WO**

LEARN NOW  
立即了解



MOBILE/WHATSAPP  
[+852] 6354 0681  
MR. CHAN 陳先生

Website: [www.swl-hk.com](http://www.swl-hk.com)

Email: [samwo@swl-hk.com](mailto:samwo@swl-hk.com)

Address: DD326, LOT 223, Shui Hau Village, Lantau Island, N.T.

Office Address: RM18, Block A, 11/F Winfield Industrial Building, Tuen Mun, N.T.





**APPLY NOW! THE CLP FEED-IN TARIFF  
WILL ONLY PAYBACK UNTIL THE END OF 2033!**  
APPROVE AS SOON AS POSSIBLE! THE SOONER YOU DO IT, THE SOONER YOU BENEFIT!

無論您何時申請，中電可再生能源回購計劃，  
**也只回購直到2033年底！！**  
**馬上申請！盡快批核！早做早得益！**

### APPLY BUILD YOUR PV SOLAR SYSTEM

You need to prepare is simple:

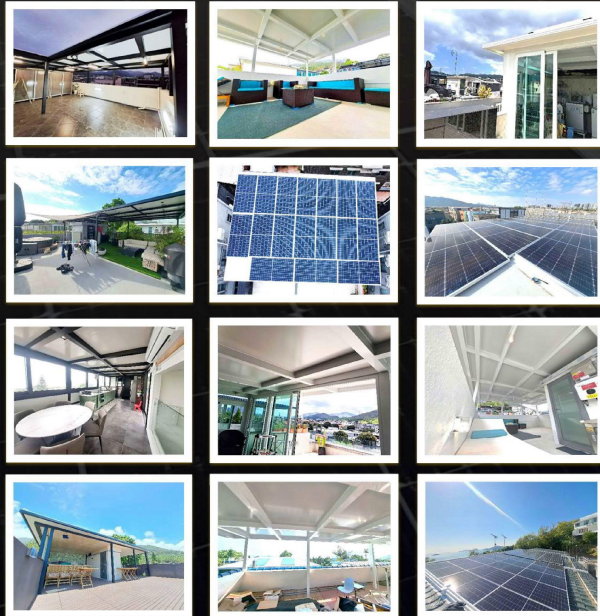
1. Make an appointment
2. Provide a copy of your ID card
3. CPL bill

### 申請建造您的太陽能系統

您簡單的只需準備:

- 一、預約上門度呎日期
- 二、提供身份證副本
- 三、電費單

We will provide one-stop service, free on-site measurement, system planning and design, and handle all application documents. No charge if not successful. Welcome to contact us for a free consultation.  
本公司一站式，免費上門度呎、系統規劃設計、處理各項申請文件。不成功不收費，歡迎聯絡我們免費諮詢。



Over 30 neighboring customers have installed our solar system and are benefiting from it.

已經過30間鄰里客戶，安裝了我們的太陽能系統並在得益其中



**LANTAU SOUTH (RESTRICTED AREA) CONTRACTOR  
大嶼山南(禁區) 專區承辦商**

### Have you ever encountered the following problems?

1. Previous solar system engineering companies no longer operate in South Lantau.
2. Due to the remote location, the cost and freight costs are high, which does not match the advertised price.
3. In terms of after-sales service, maintenance, repair, basic inspection and other issues, due to the focus of the above-mentioned companies not being in this area, it results in only long waiting or idling.

We understand all of the above troubles and problems because we are all neighbors in South Lantau.

**Choosing us is definitely the most sincere attitude, the most fair price, the highest efficiency, the most follow-up after-sales, and the most thoughtful maintenance in this area!**

### 您是不是曾經遇過以下問題？

- 一、以往的太陽能系統工程公司再沒有營運大嶼山南業務。
- 二、因偏遠地區關係，造價和運費成本偏高，與其標榜的報價不符。
- 三、論售後服務、保養、維修、基本檢查等問題，因上述公司重心不是本區，導致只有漫長的等待或閒置。

以上的煩惱與問題我們都明白，因為我們都是大嶼山南區鄰里。

**選擇我們，一定是本區是態度最真誠、價錢最公道、效能最大化、售後最跟進、保養最周到！**





FRAME WORKS MATERIALS ARE WELL CHOSEN FOR YOU, WELL RECEIVED.  
為您精心挑選建材 深受一至好評

### LONGi's Ultra-High-Value PV Panel 隆基太陽能板

LONGi's ultra-high-value PV panel could generate great benefit

to customer with its advantages of higher power, lower degradation and higher reliability.

隆基超高價值的太陽能模組產品以其更大功率、更低衰减、更具可靠性等優勢,不斷惠及客戶利益及地方經濟。

### The Main Frame - Aluminum Square Hollow Section 主力企柱 鋁方通

Aluminum SHS is lighter with better quality in multi-color options,

aesthetics and easier to be handled.

鋁方通更輕更優質,而且多色可選並美觀易打理。



### GROWATT Inverter 古瑞瓦特 光伏逆變器

GROWATT photovoltaic inverter, built-in DC side secondary lightning protection, maximum conversion efficiency 98.4%.

古瑞瓦特 光伏逆變器, 內置直流側二級防雷, 最大轉換效率 98.4%。

### Heat Insulation Aluminum Sandwich Board 隔熱鋁夾芯板

Heat Insulation Aluminum Sandwich Board 隔熱鋁夾芯板

More thermal insulating, waterproof, flexible, stable, and beautiful.

更具隔熱隔音和防水功效, 提供靈活的可塑性,且穩固又美觀。

### HIGH REWARD, LEGAL, PRACTICAL, EARLY BENEFIT

The Feed in Tariff Scheme is a contract signed between the government, power companies, and you.

CLP at a price \$4HKD per kWh. Once signed, the buyback electricity price will remain unchanged until 2033.

It is definitely a multi-faceted investment that benefits all parties.

In the future, you will definitely thank yourself for making a wise choice today and benefiting early.

### 極高收益 合法實用 早做早得益

中電可再生能源回購計劃, 是政府和電力公司與您簽定的合約。以港幣\$4 每度電的價錢向村屋太陽能系統回購每天生產的電力。一經簽訂, 回購電價將維持不變直到2033年底止。絕對是一舉多得, 多方共贏的投資。將來, 您必定會感謝今天的自己, 作出明智的選擇, 早做早得益。

### OBSERVING INCOME REMOTELY ONLINE AT ANY TIME



### PV SYSTEM PAYBACK SCHEME 太陽能收益計算 Refer To General Village House PV System Case 參考一般村屋太陽能案例

Total Roof Area 天台總面積 <b>700sq. ft. / 平方呎</b>	CLP/ HKE Refund Value 電力公司回購價 <b>HK\$4</b>	PV System Cost 工程投資額約 <b>HK\$160, 000</b>
Approve Legal Roof Area 批核合法天台頂面積 <b>300sq. ft. / 平方呎</b>	Estimated Approve 估計成功批核期 <b>2023 Late/下旬</b>	Payback Period 回本年期約 <b>3.35 YR/年</b>
Estimated PV Panel NO. 估計安裝太陽能板數目 <b>16 Pcs/塊</b>	Contract Expires 電力公司約滿期 <b>2033 End/年底</b>	Annual Rate Return 年回報率 <b>30.00%</b>
Estimated PV Power Generation/Annual 估計發電量/年發電量 <b>9.28kW/11920kW</b>	Average Annual Income 年平均回報 <b>HK\$47, 700</b>	Net Profit Return 淨利潤回報額 <b>HK\$332, 700</b>

### BUILD YOUR SOLAR SYSTEM PROCESS 建造您的太陽能系統流程



On-Site Planning→  
現場規劃→



Design Proposal→  
提供設計方案→



Submit Application To CLP→  
向中電遞交申請→



Construction & Installation→  
施工安裝→



CLP Testing & Fit Meter→  
中電測試及掛錶→



Grid Connection  
正式併網

Our company will come for site measurement, design drawing, and submit relevant document for FiT application. Our company will not charge any cost if the application is not successful. (Landlord may consider the "Self-Sufficiency Plan")

本公司將會免費上門度尺、繪圖、提交相關文件申請。若不成功批核, 本公司亦不會收取任何費用。(客人可改考慮「自給自足計劃」)

### GUARANTEED LEGAL STABLE REASSURING PRACTICAL 保證 合法 穩固 安心 實用

CLP "The Feed in Tariff Scheme" Confirmation

中電「可再生能源電價」確認書

By Authorized Person (AP) and submit to LD

合資格人任簽批安全證明書(AP)

By the qualified electrical contractors approve WR1

合資格電業承辦商簽批完工報告(WR1)

Registration Power Supply Fit Scheme (GF1)

註冊發電設備(GF1)

